



Town of Copake
Map Series

Regional Context
Columbia County Map

- Columbia County Communities
- Town of Copake
- Waterbodies
- Rivers and Streams

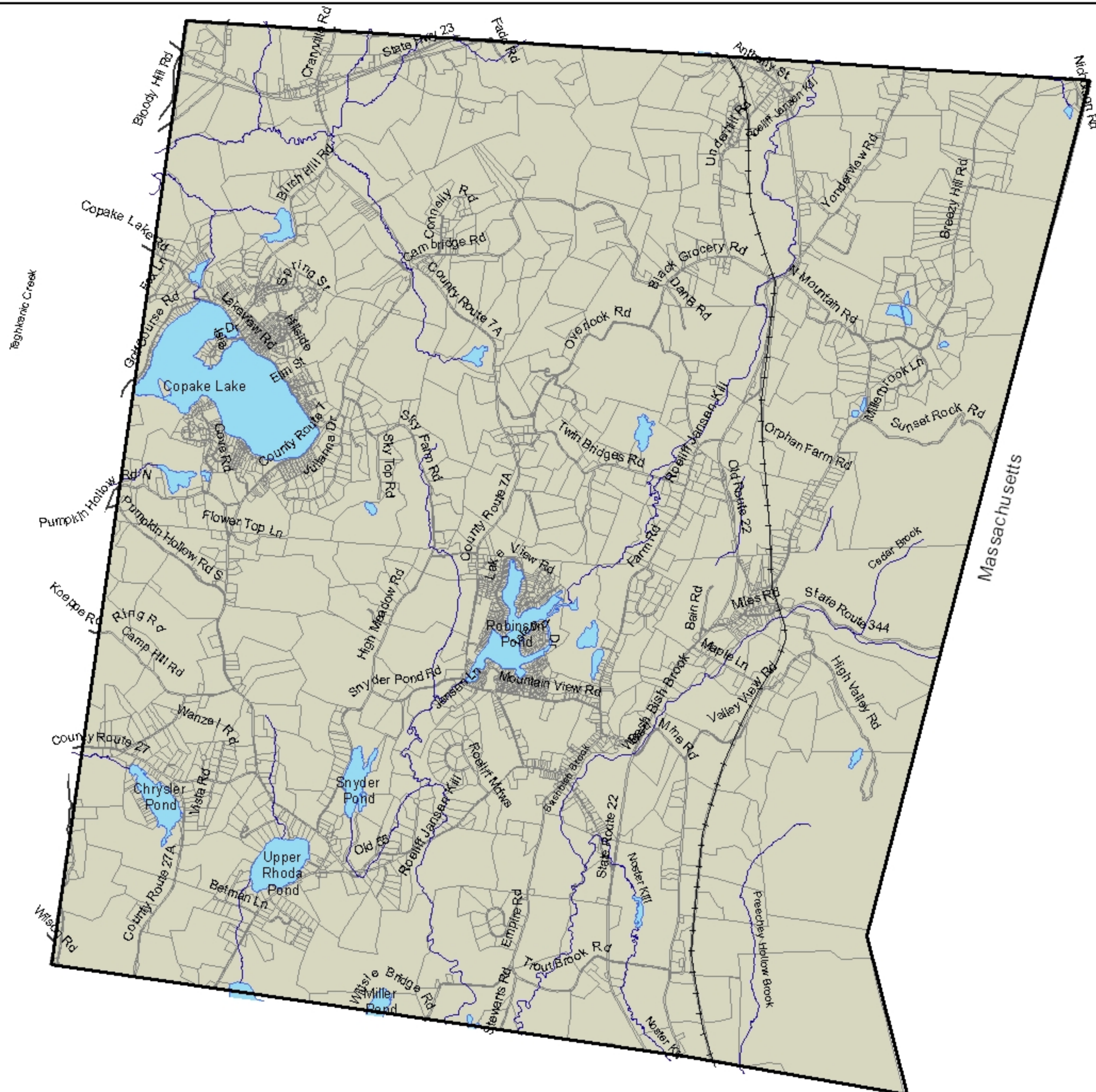


RIVER STREET
PLANNING & DEVELOPMENT

Draft December 2010

Source: Columbia County
2010 Real Property Tax

Town of Copake - Map Series
Roadways and Waterbodies



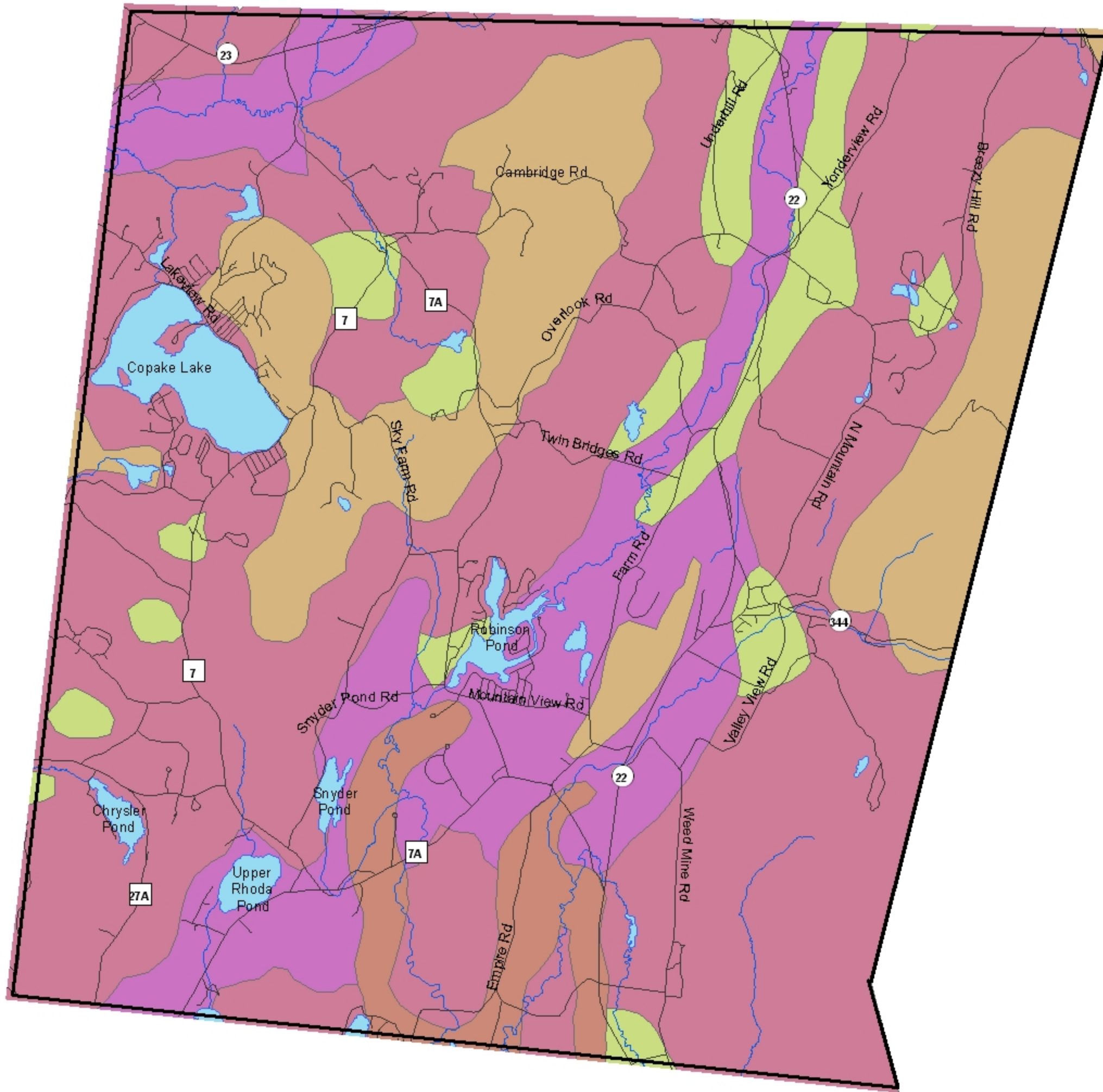
- Town of Copake
- Waterbodies
- Roadways
- Railroad



RIVER STREET
PLANNING & DEVELOPMENT

Draft: December 2010

Source: Columbia County
2010 Real Property Tax

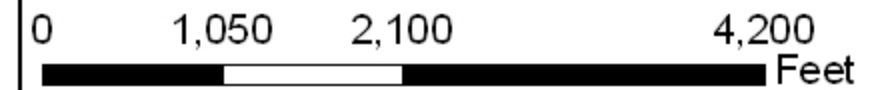


Town of Copake - Map Series

Surface Geology

Surface Geology

- al - Recent Alluvium
- k - Kame Deposits
- og - Outwash Sand and Gravel
- r - Bedrock
- t - Till Variable Texture (boulders to silt)
- Copake Town Boundary
- Roadways
- Waterbodies
- Rivers and Streams




RIVER STREET
PLANNING & DEVELOPMENT

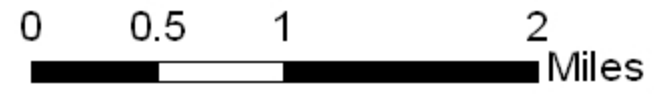
Draft: December 2010

Source: Columbia County
2010 Real Property Tax

Town of Copake - Map Series

Flood Zones

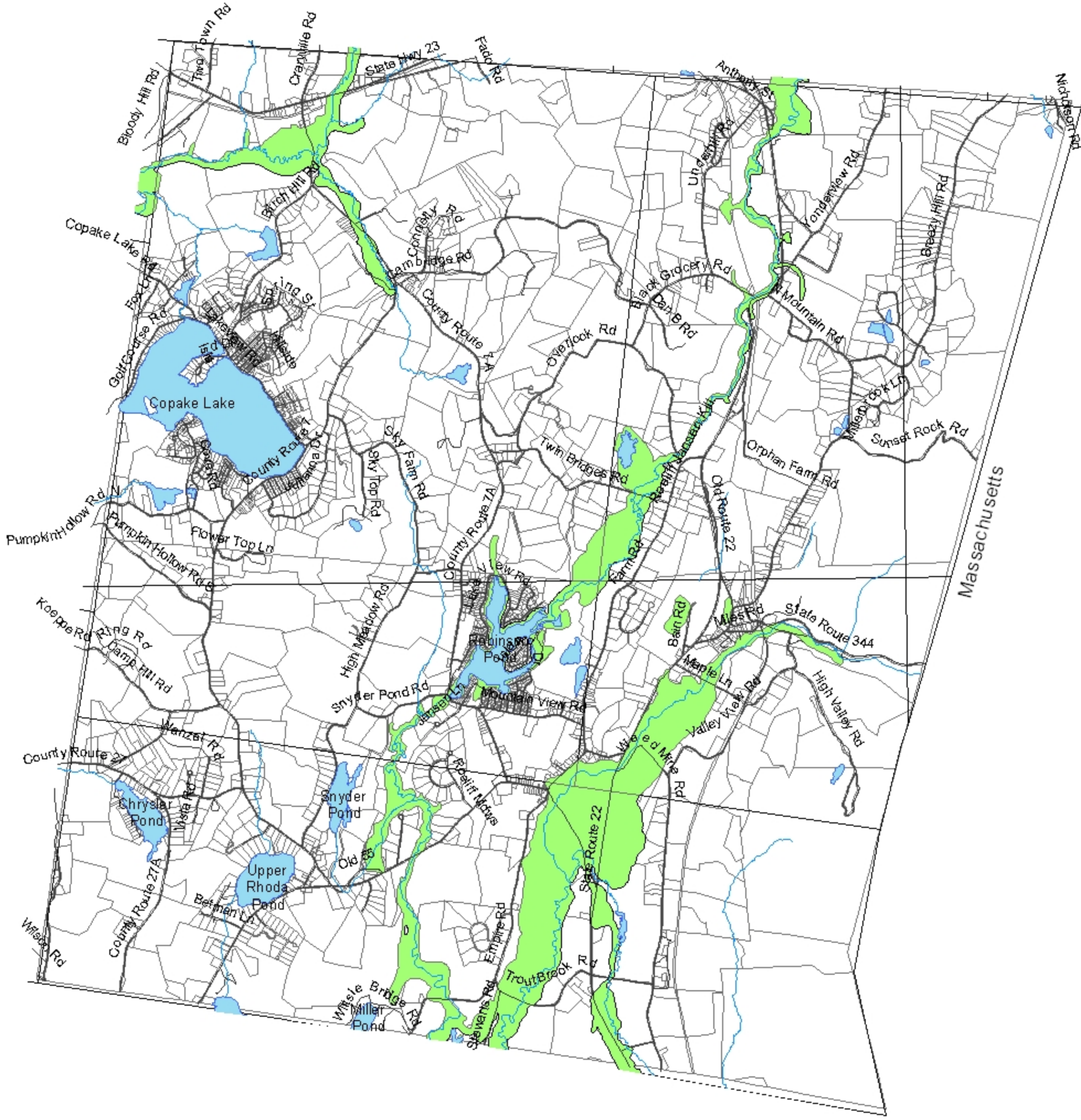
-  100 Year Flood Zone
-  Rivers and Streams
-  Waterbodies
-  Roadways
-  Copake Parcels



RIVER STREET
PLANNING & DEVELOPMENT

Draft: December 2010





Source: Columbia County
2010 Real Property Tax



Town of Copake - Map Series

Historic Resources and Sites

- Historic Sites on the National Register
- 1 - Church of St. John's in the Wilderness
 - 2 - Copake Grange Hall
 - 3 - Copake Iron Works Historic District
 - 4 - Copake United Methodist Church and Copake Cemetery

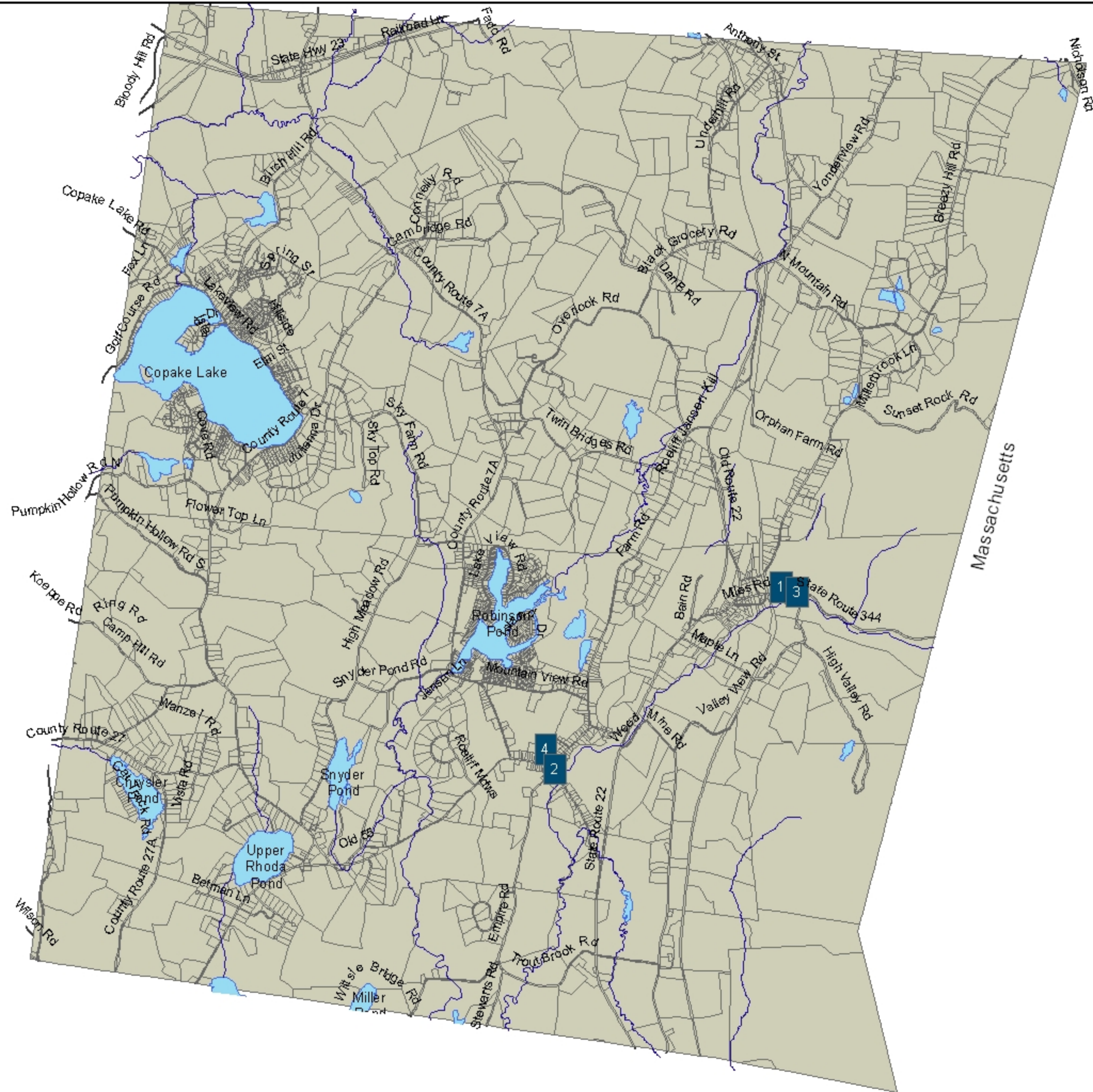
-  Waterbodies
-  Rivers and Streams
-  Roadways
-  Copake Parcels



RIVER STREET
PLANNING & DEVELOPMENT

Draft: December 2010







Source: Columbia County
2010 Real Property Tax

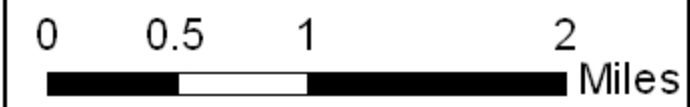


Town of Copake - Map Series

Recreation and Community Services

- 1 - Town Hall
- 2 - Police Department
- 3 - Community Rescue Squad
- 4 - Copake Fire Department
- 5 - Craryville Fire Department
- 6 - Town Highway Garage
- 7 - Roeliff Jansen Community Library
- 8 - Taconic Hills Central School District
- 9 - Copake Country Club
- 10 - Camp Waubeeka
- 11 - Camp Hill Village
- 12 - Oleana Campground
- 13 - Camp Pontiac
- 14 - Catamount Ski Area
- 15 - Taconic State Park
- 16 - Copake Memorial Park

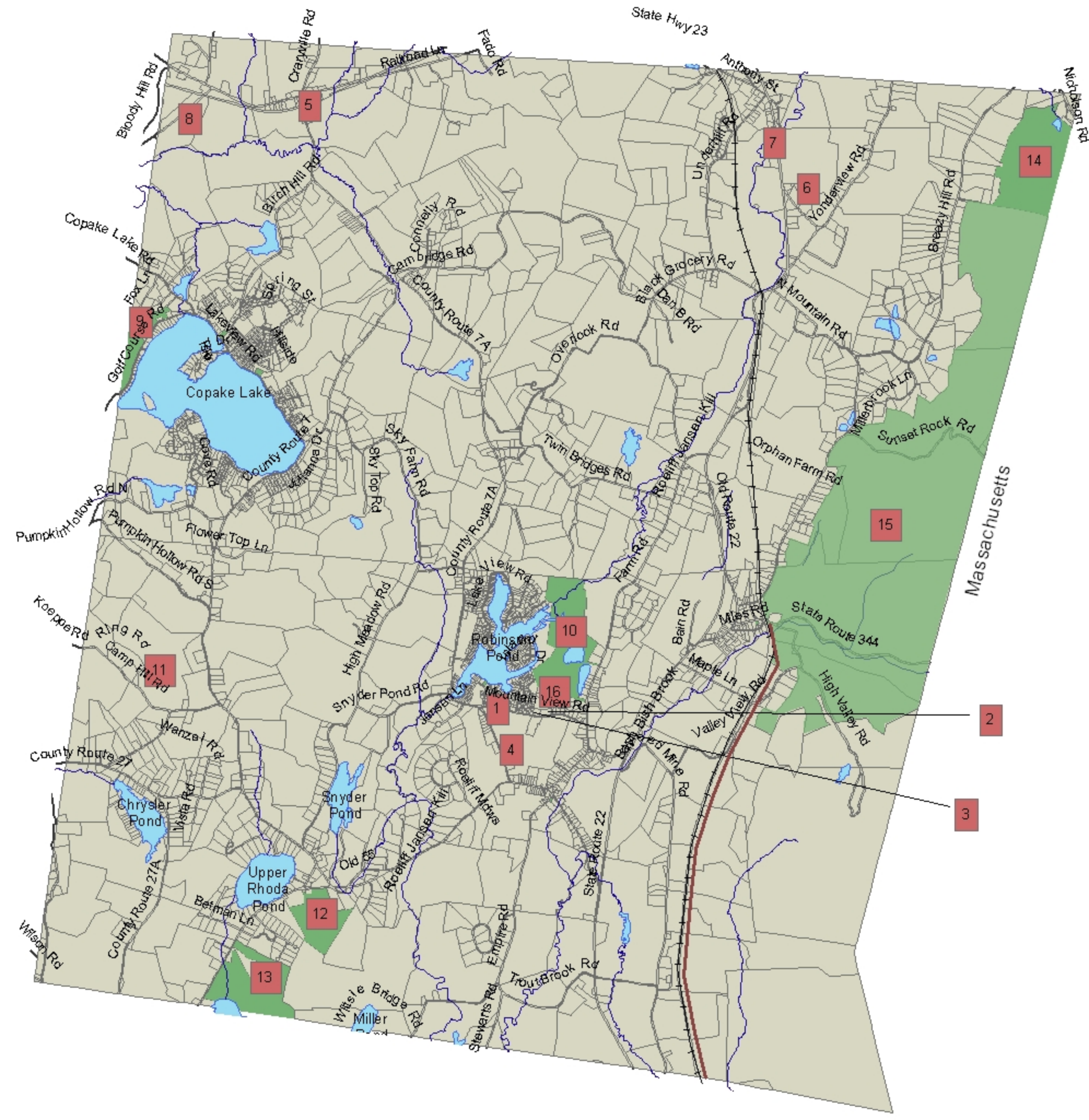
-  Parks
-  Waterbodies
-  Lakes and Streams
-  Roadways
-  Railroad
-  Harlem Valley State Rail Trail



RIVER STREET
PLANNING & DEVELOPMENT

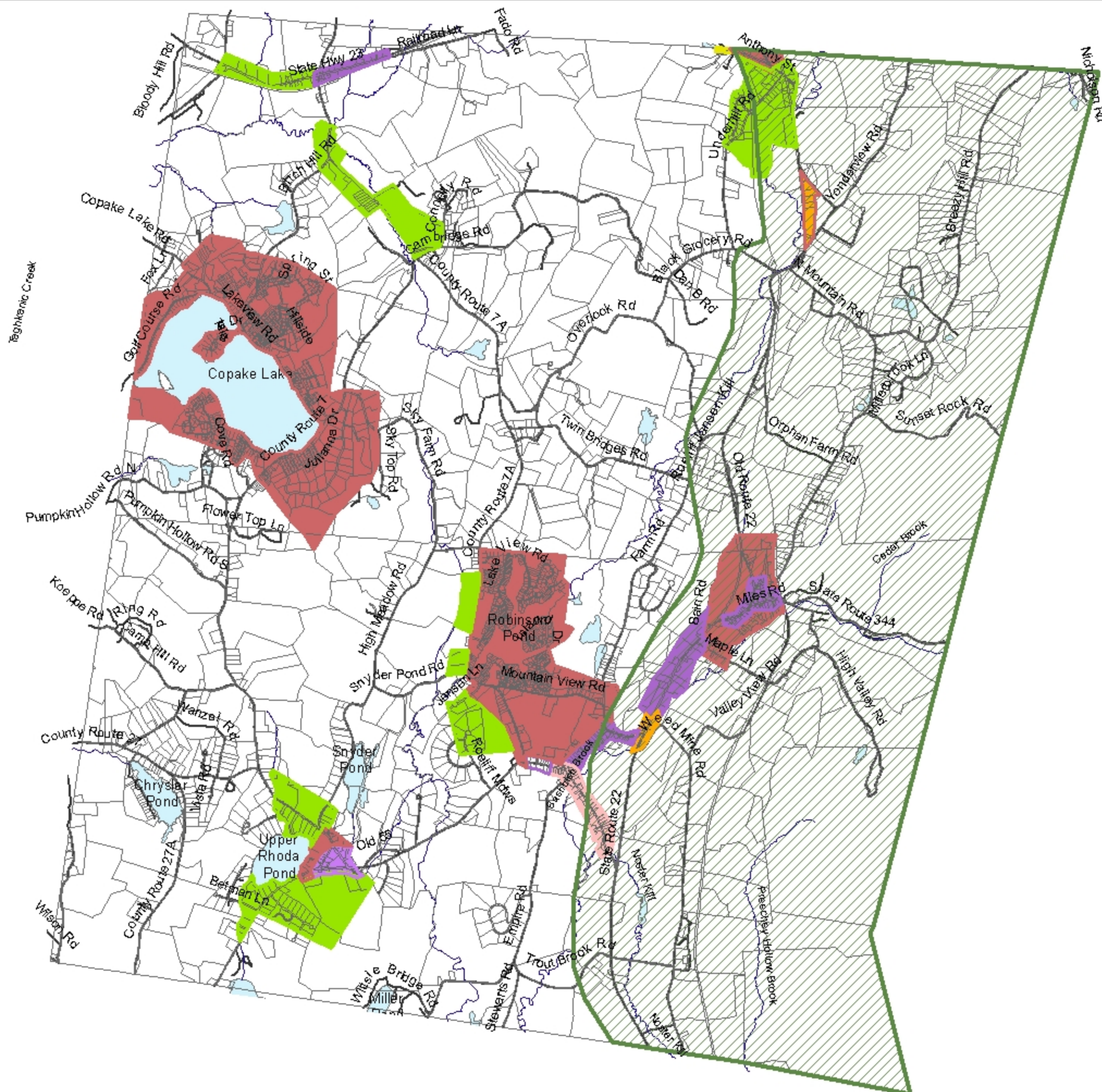
Draft: December 2010

Source: Columbia County
2010 Real Property Tax

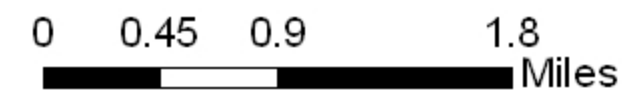


Town of Copake - Map Series

Zoning Map



- Residential 3 Acres
- R-1 Residential 2 Acres
- R-2 Residential 30,000 sq. ft.
- B-R Business Residential 30,000 sq. ft.
- B-1 General Business
- B-2 Highway Business 40,000 sq. ft.
- I-1 Industrial 2 Acres
- Scenic_Overlay_Zone
- Waterbodies
- Roadways



RIVER STREET
PLANNING & DEVELOPMENT

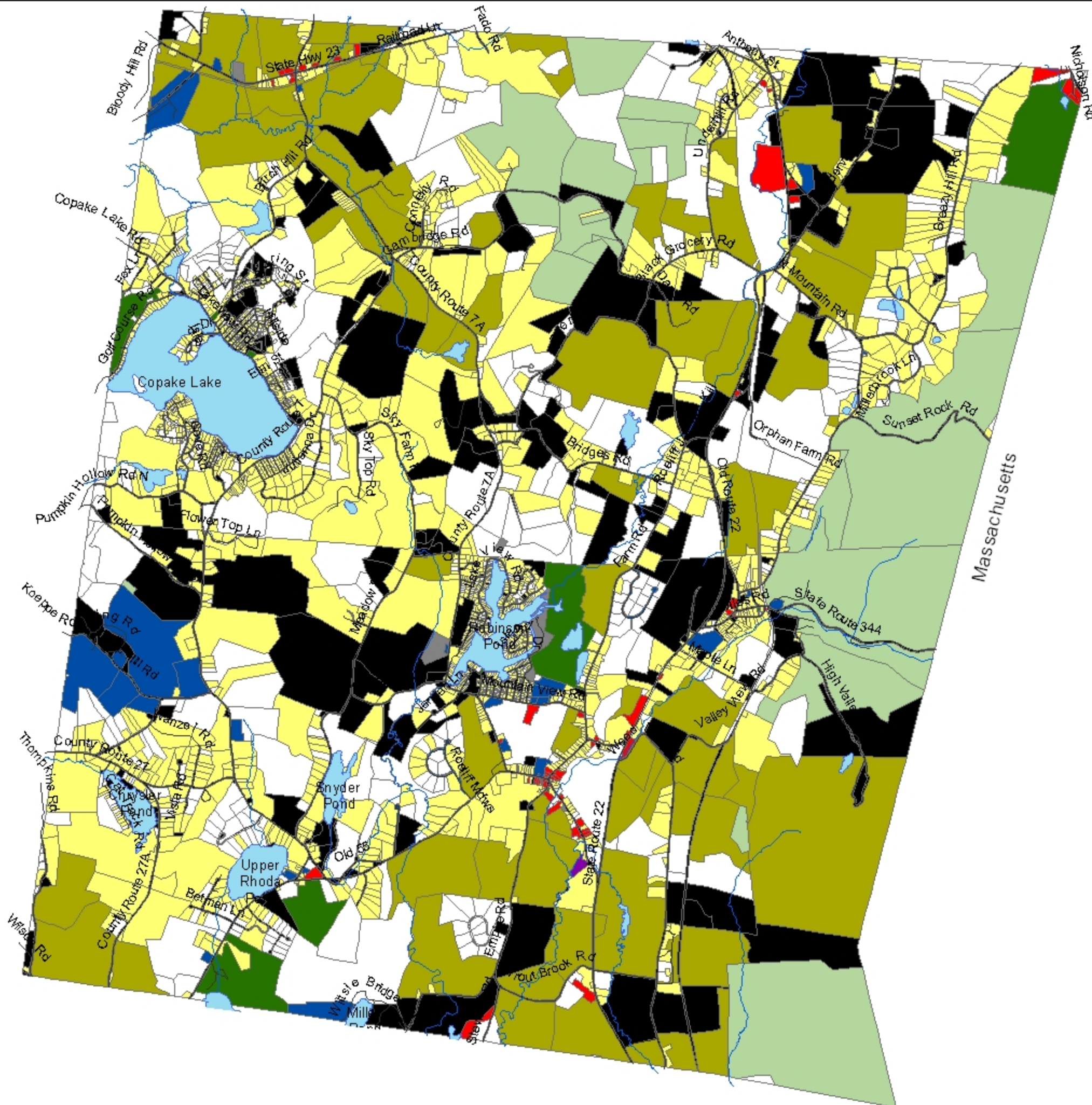
Draft: December 2010

Source: Columbia County
2010 Real Property Tax

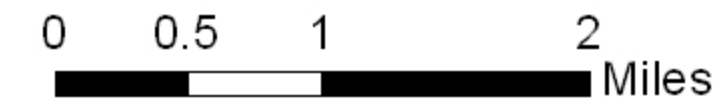
Unofficial map for planning purposes only

Town of Copake - Map Series

Land Use Map



- Agriculture
- Residential
- Vacant Land
- Commercial
- Recreation and Entertainment
- Industrial
- Public Services
- Wild, Forested, Conservation Lands and Public Parks
- Parcels without Land Use Classification
- Waterbodies
- Rivers and Streams
- Roadways



RIVER STREET
PLANNING & DEVELOPMENT

Draft: December 2010

Source: Columbia County
2010 Real Property Tax



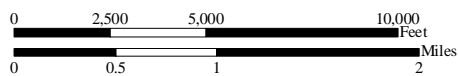
Orthophoto

**Farmland Protection Strategies
Copake Comprehensive Plan**

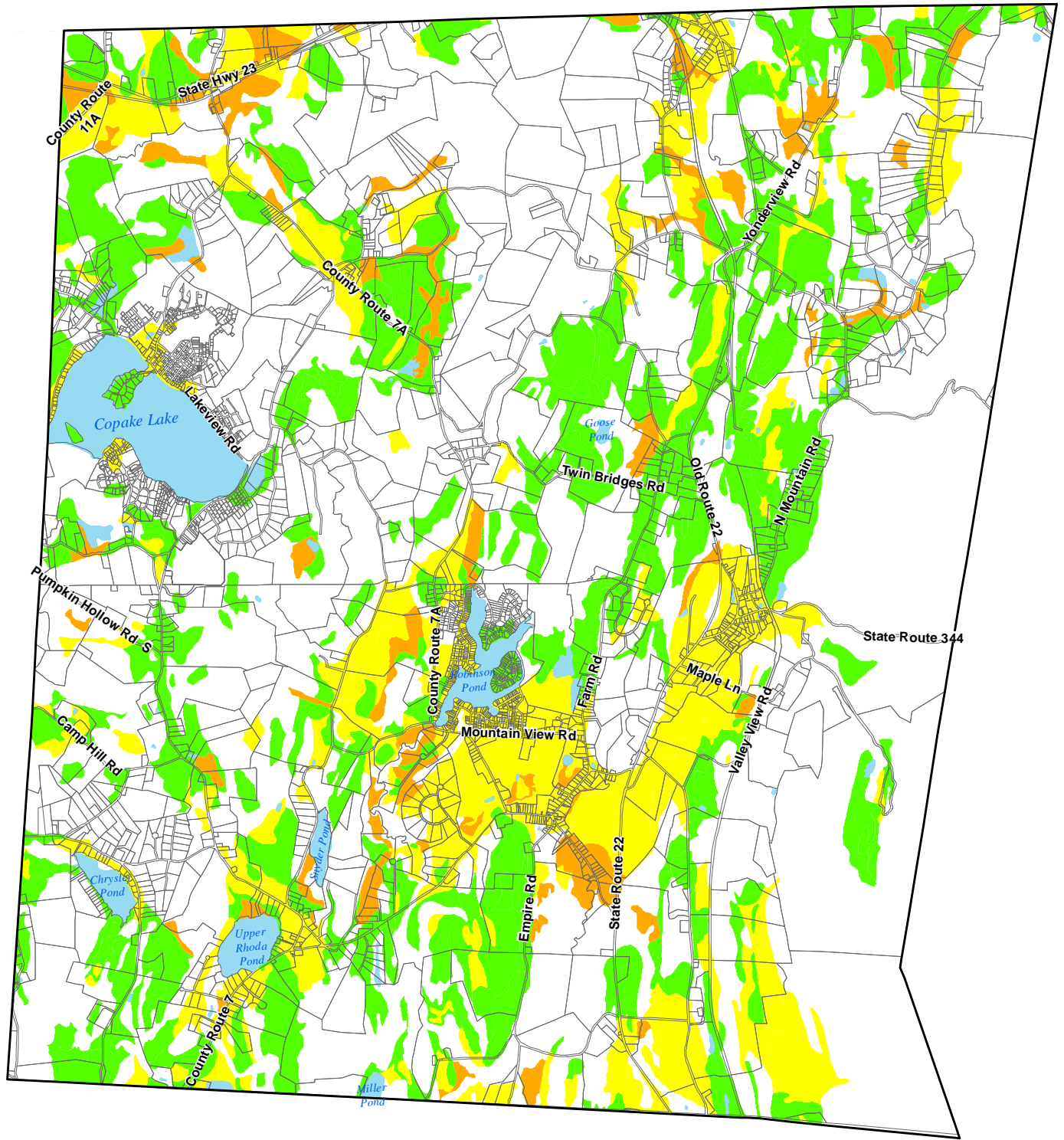
*Prepared for: Town of Copake, NY
Prepared by: Dodson Associates, Ltd.*

1" = 5,000'

January 27, 2010



Sources: NYS GIS Clearinghouse, 2009 National Ag. Imagery Program, USDA Geospatial Data Gateway, Columbia Land Conservancy.



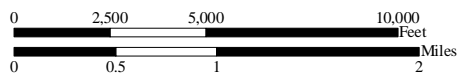
Farmland Soils

Farmland Protection Strategies Copake Comprehensive Plan

Prepared for: Town of Copake, NY
Prepared by: Dodson Associates, Ltd.

1" = 5,000'

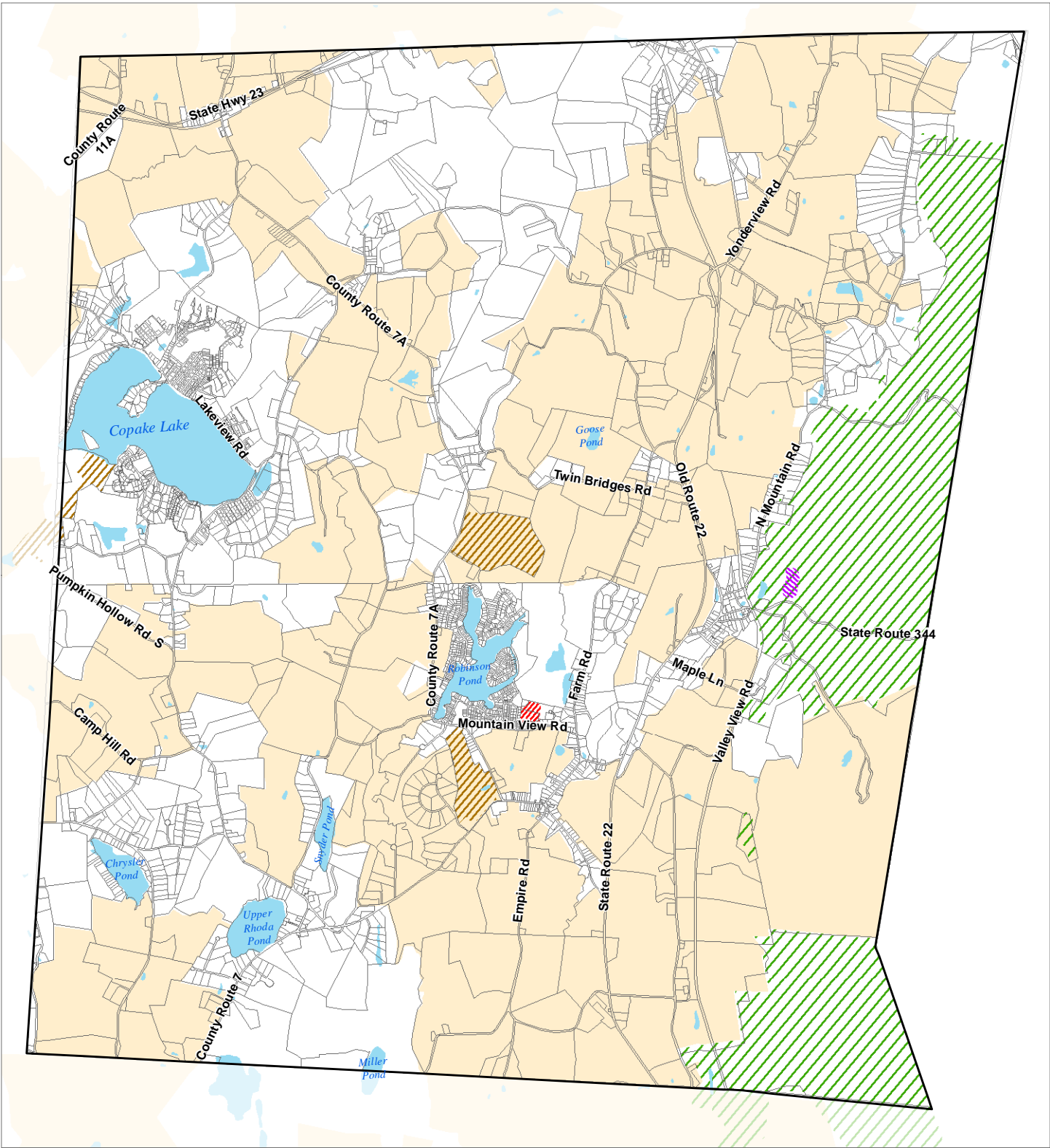
January 27, 2010



Legend

- Copake Town Boundary
- Parcel Boundaries
- Prime Farmland
- Prime Farmland if Drained
- Farmland of Statewide Importance
- Water

Sources: NYS GIS Clearinghouse, Cornell University Geospatial Information Repository, USDA Geospatial Data Gateway, Columbia Land Conservancy.



Protected Lands

Farmland Protection Strategies Copake Comprehensive Plan

Prepared for: Town of Copake, NY
Prepared by: Dodson Associates, Ltd.

1" = 5,000'

January 27, 2010



Legend

▭ Copake Town Boundary

▭ Parcel Boundaries

💧 Water

🟡 State Agricultural District (Partial Protection)

Protected Lands

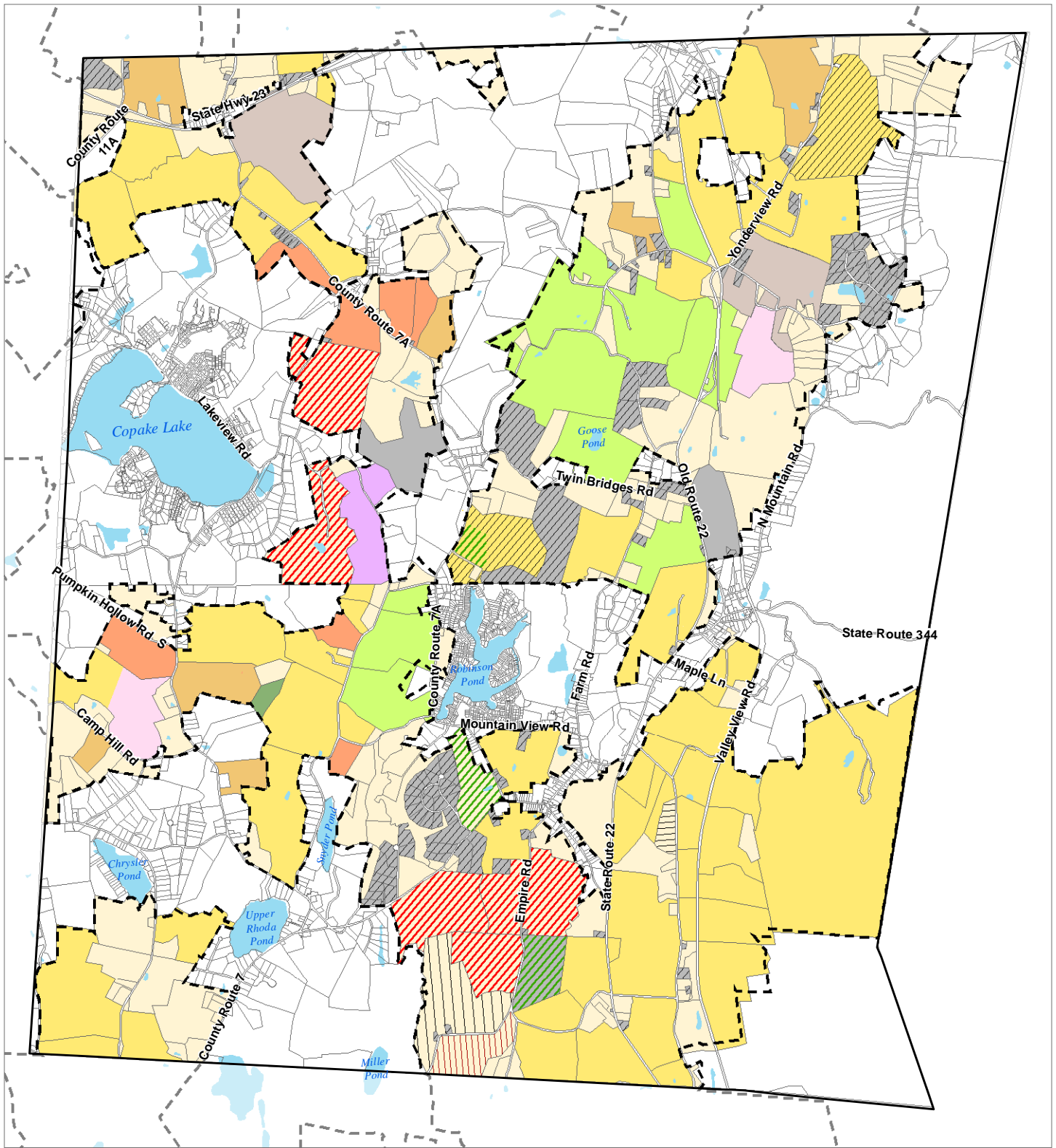
🟢 Taconic State Park

🔴 Copake Memorial Park

🟡 Taconic State Park Campground

🟠 Private Easement by Columbia Land Conservancy

Sources: NYS GIS Clearinghouse, Cornell University Geospatial Information Repository, USDA Geospatial Data Gateway, Columbia Land Conservancy.



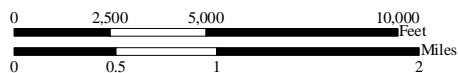
Farmland

Farmland Protection Strategies Copake Comprehensive Plan

Prepared for: Town of Copake, NY
Prepared by: Dodson Associates, Ltd.

1" = 5,000'

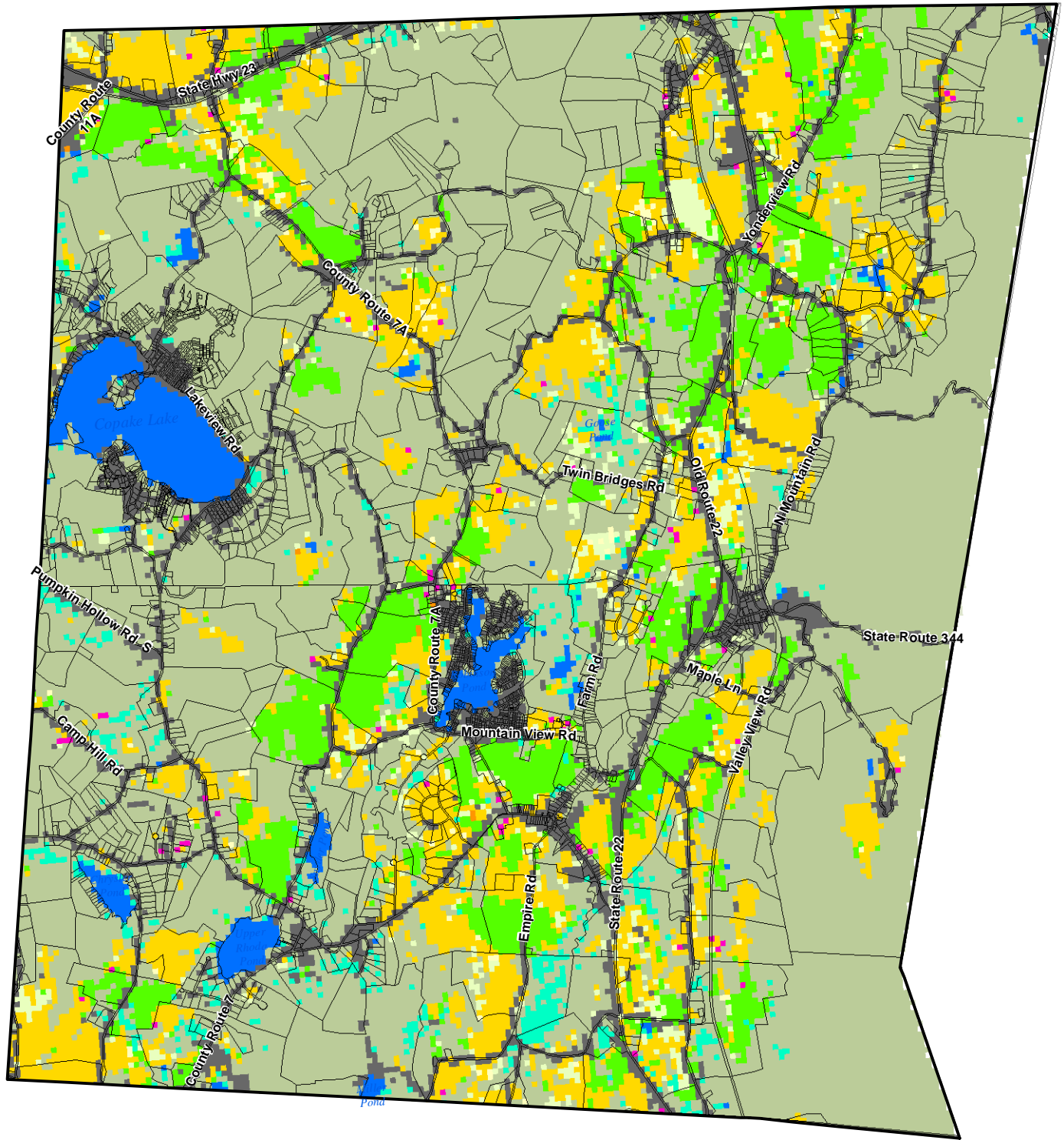
January 27, 2010



Legend

Copake Town Boundary	Land Status	Crops	Horses
Parcel Boundaries	Conserved	Fallow	Nursery
State Agricultural District	Subdivided	Pasture	Forest
	Developed	Dairy	None
	Development Approved	Beef Cattle	Not Specified
	Sold		
	For Sale		

Sources: NYS GIS Clearinghouse, Cornell University Geospatial Information Repository, USDA Geospatial Data Gateway, Columbia Land Conservancy. Bill Kiernan & Marcia Becker for Farm Types/Land Status.



Cropland - 2008 National Agricultural Statistics Service (NASS) Data

Farmland Protection Strategies Copake Comprehensive Plan

Prepared for: Town of Copake, NY
Prepared by: Dodson Associates, Ltd.

1" = 5,000'

January 27, 2010



Legend

- | | | |
|----------------------|------------------------------|--|
| Copake Town Boundary | Aquaculture | Woodland |
| Parcel Boundaries | Urban/Developed | Wetland |
| Grains, Hay, Seeds | Other Crops | Water |
| Tree Crops | Row Crops | Pasture, Non-ag, Range, Waste, Farmstead |
| | Idle Cropland / Fallow / CRP | |

Sources: NYS GIS Clearinghouse, Cornell University Geospatial Information Repository, USDA Geospatial Data Gateway, Columbia Land Conservancy.